

NEW DIGITAL FORMAT

November 2021

# CLUBLIFE

— LAKEWOOD OAKS COUNTRY CLUB

SCENIC GOLF COURSE

—  
FALL FESTIVITIES

—  
STAY IN THE KNOW



LAKEWOOD OAKS  
— COUNTRY CLUB —



# Table of Contents

- 3** From the GM >
- 5** Welcome New Members >
- 6** Stay in the Know >
- 7** WGA Update >
- 7** From the Clubhouse Manager >
- 7** Golf Committee >
- 8** Return to Excellence >
- 11** Festive Events >
- 12** Golf Industry News >
- 14** Scenic Courses >
- 17** The Argyle Inspiration >
- 18** Golf Update >
- 19** Wine of the Month >





## *From the General Manager*

MARK REID

This November, we are reminded of all the many moments surrounding us in which we are indeed thankful for. The colorful changing of the leaves came a bit late this season on the course, but nonetheless they have shown their vibrant colors. Tournaments have wrapped up for the season allowing for the leisure of the game to take over our course here at Lakewood Oaks.

On behalf of myself and all the LOCC staff:

happy  
Thanksgiving



651 NE St. Andrews Circle, Lee's Summit, MO 64064  
816.373.2505 | [LakewoodOaksCC.com](http://LakewoodOaksCC.com)

[VIEW LOCC STAFF](#)



# CHECKUPS ARE GOOD FOR YOUR FINANCIAL HEALTH.

Like annual physicals, a yearly financial checkup can help uncover hidden problems, inspire you to set new goals, provide information you need to improve your health, and help make sure you're on track for well-being. We specialize in thoughtful and objective investment guidance aimed at keeping your finances and goals in shape.

Call today for more information or to schedule a consultation.



**Craig Kurth**, Wealth Advisor, CFP®

**Michael Garden**, Wealth Advisor

**Alexandra Kurth Garden**, Wealth Advisor, CFP®

5700 W. 112<sup>th</sup> St., Suite 120  
Overland Park, KS 66211  
(913) 323-3113 Office

1251 NW Briarcliff Parkway, Suite 235  
Kansas City, MO 64116  
(816) 452-4000 Office

ckurth@lpl.com  
mgarden@lpl.com  
akurth@lpl.com

[www.pcgstrategies.com](http://www.pcgstrategies.com)



Securities offered through LPL Financial, member FINRA/SIPC. Investment advice offered through PCG Wealth Advisors, LLC, a registered investment advisor. PCG Wealth Advisors, LLC and PCG Wealth Management are separate entities from LPL Financial.

MKT-06089-0618 Tracking # 1-745751 (Exp. 8/20)





## *Welcome New Golf Members*

KEM JACKSON, LOCC OFFICE MANAGER

Congratulations to Jake Knights for making a Hole-in-One on #5 on September 5th!

If you have a question about a charge on your account, you can view the ticket online under your statement by clicking on the ticket number. The ticket will pop up with the detailed items.

For family memberships, if your spouse would like their own login to make tee times, please email me at [kem@logc.org](mailto:kem@logc.org) with their email and cell phone number and I will get them set up.

If you have any questions about your account, would like to sign up for automatic ACH payments on the 20th or would like your statement emailed instead of a paper copy, please email me. Statements are emailed around the first day of the month. If you have not seen the email by the 5th, please check your spam folder and add [kem@logc.org](mailto:kem@logc.org) as a safe sender.

**WELCOME NEW  
CLUB MEMBER!**

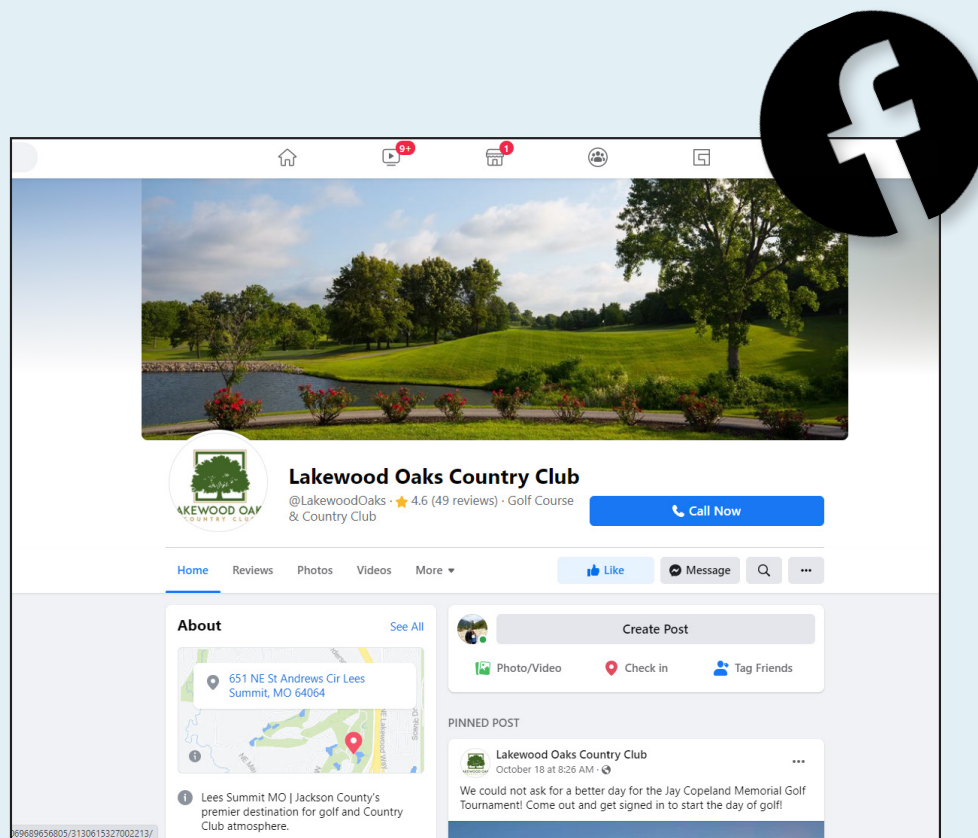
Jim Blake  
Paul Essmyer  
Caitin & Ashkan Haghmanesh  
Tim Hutteger & Allison Bogart  
Luke Sealer





# Stay In the Know at **LAKEWOOD**

By: Rachel Yaros  
Art & Communications Director at LOCC & LPOA



Follow Lakewood Oaks on Facebook by searching @LakewoodOaks. Here, you will find reminders, deadlines, event information and recaps!





---

Thank you to all the ladies at Lakewood Oaks for making 2021 a great season. It has been great getting back to “almost normal”! See you next Spring.

---



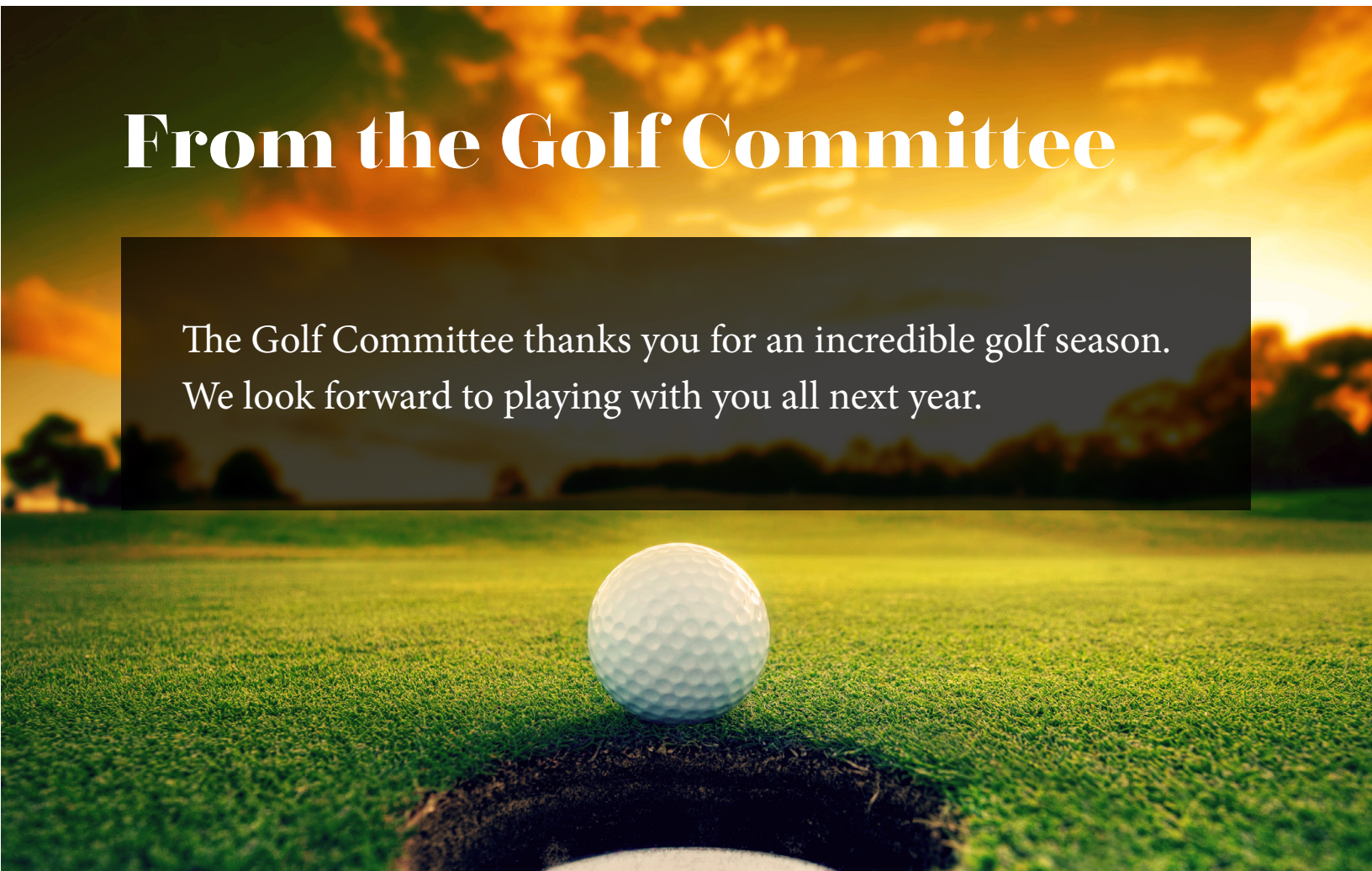
*The Latest From  
the Clubhouse  
Manager*

**FRANK CASCONE**

---

The Holidays are approaching quick so don't forget to book a room for your company or family party. Let us do the work for you so you can relax and enjoy the holidays!

## From the Golf Committee



The Golf Committee thanks you for an incredible golf season. We look forward to playing with you all next year.



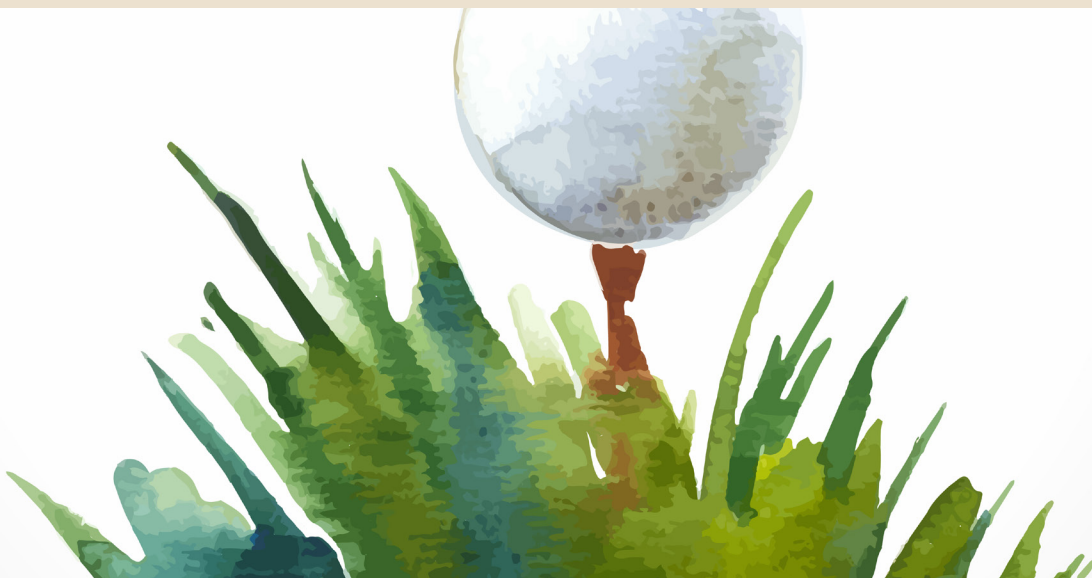


## *Returning to Excellence*

### **Frosted Courses**

Play is often delayed on courses during the winter due to frost on golf greens. The reason the club should not allow play on greens that are covered with frost is that the turf will be damaged from walking on the frost. The ice crystals in the frost can puncture the leaves from foot pressure. The damage will appear as footprints later in the day and will be present until the turfgrass grows out of the damage. The damage may be evident for several months and result in weaker turf in the spring in the area around where the hole was on the day frost was present.

*By Dr. Leon Lucas*





**Take years off  
your face with  
the secret.**

**SECRET RF**

Available exclusively at



[www.eastlandfb.com](http://www.eastlandfb.com)

**Thank you  
for choosing  
Lakewood  
Oaks!**





# Don't move. Instead, improve.

Remodel, rebuild and renew with Four Sons Construction.  
We specialize in kitchen, basement and bathroom renovation.



We're a third-generation family business with deep roots in the Lee's Summit area. Our reputation lives in your home, so we don't cut corners. We're committed to superior construction, even if it takes a little more time.

816.537.3210

www.foursonscontractors.com



## Get one-on-one help with your Medicare questions.

I'm Ryan Potts, a licensed sales agent in Kansas City Metro. When it comes to Medicare, it's important to consider all of your options. What works well for your neighbor may not be the best fit for you. I know the ins and outs of Medicare, and I'm ready to answer your questions and help you find a plan that fits your needs. **Take advantage of my knowledge and experience to:**

- Take the confusion out of Medicare
- Receive one-on-one service
- Get help comparing plans
- Make enrolling in a plan easier

I look forward to helping you explore your Medicare options so you can enroll in a plan with confidence.

### It's time to take advantage.

**Ryan Potts**  
Licensed Sales Agent  
816-507-3991, TTY 711  
rynpotts@gmail.com  
UHCMedicareSolutions.com

United  
Healthcare

Plans are insured through UnitedHealthcare Insurance Company or one of its affiliated companies, a Medicare Advantage organization with a Medicare contract. Enrollment in the plan depends on the plan's contract renewal with Medicare. ©2020 United HealthCare Services, Inc. All rights reserved. Y0066\_21SPRJ55189\_C

SPRJ55189

JillUnderwood.com

## What can I do for you?



With over 35 years as a Mortgage Lender, I've been able to help thousands of families make great decisions about their home loans.

### I want to help you too!

Reach out to me today via DM,  
text, email or phone call.



Purchase Loans • Refinance  
Vacation Homes • Investment Property  
Credit Score Guidance • Pre-Approvals



**Jill Underwood**

Helping you make  
Home Loans Easy®

**913-915-0150**

jill@jillunderwood.com

The Jill Team • Mortgage Queen • NMLS #454676

Powered by: Movement Mortgage • 833 NE Lakewood Blvd • LS, MO 64064





# *Festive Events*

in Kansas City 2021

Festival of Lights

**Nov. 11- Dec. 30**

Holiday Boutique

**Nov. 18-21**

KC Rep presents A Christmas Carol

**Nov. 19- Dec. 26**

Hall of Fame Weekend

**Nov. 22-23, 2021**

Christmas in the Park at  
Longview Lake

**Nov 24, 2021 - Dec 31, 2021**

Plaza Lights

**Nov. 25, 2021 – Mid Jan.**

Mayor's Christmas Tree

**Nov. 27, 2020 - Jan. 3, 2021**

The Nutcracker

**Dec. 3-24**





# *Golf Industry News*

THE LATEST GOLF NEWS  
YOU MAY HAVE MISSED



**The U.S. Open and Open Championship  
are Moving to a New TV channel**

[READ FULL ARTICLE](#)

**Can You Still Post Scores to  
Your Handicap? It Depends  
Where You Live**

[READ FULL ARTICLE](#)



**ClubTest 2021  
is here!**

[READ FULL ARTICLE](#)

*All sources for the November ClubLife Industry News are from GOLF magazine.*



# Discount up to 30%

with Drive Safe  
& Save™!\*

## Bret Farrar Ins Agency Inc

Bret Farrar, Agent  
3680 NE Akin Dr  
Lee's Summit, MO 64064  
Bus: 816-333-4445

I'm inviting you to make our  
roads safer and get rewarded  
for doing so. Are you in?

Contact me today to get started.



\*Some customers could see a discount up to 50%. Discount names, percentages, availability and eligibility may vary by state and coverage selected. Enrollment, terms and conditions apply.

State Farm Mutual Automobile Insurance Company, State Farm Indemnity Company  
Bloomington, IL

State Farm County Mutual Insurance Company of Texas  
Richardson, TX

1901979



# PAINTING. QUALITY. PEACE OF MIND.



12 Month Interest free plan, if you qualify.

Discount of \$200 for projects over \$2000  
- Cannot be combined with any other offers.

816-226-0681 | <https://certapro.com/northern-jackson-county/>

Contact CertaPro Painters of Northern Jackson County today for your free estimate!



Each CertaPro Painters® business is independently owned and operated.

# Your neighbor. Your lending partner.

Let us help you access the equity in your home or finance your next home.



Community Lending of America was established in 2007 by  
Jeremy Marks. We are a locally owned and operated mortgage  
lending company.

We offer world-class service, including:

- Low interest rates
- Low closing costs
- Fast closings
- Night & weekend availability
- Easy accessibility



Contact Jeremy Today!

(913) 484-0179

[communitylendingofamerica.com](http://communitylendingofamerica.com)

Community Lending of America Inc. 6900 College Blvd, Ste 740, Overland Park, KS 66211,  
913-381-3333, NMLS# 224124, KS Lic Mtg Broker: MC.0001688, MO Lic Mtg Broker: 12-1582



# Pro Shop Spotlight

SCENIC COURSES AROUND THE WORLD

Scroll down to see  
some of the most  
beautiful places to  
swing a club.



# Have you ever considered where you would golf if there were no boundaries to your dreams?

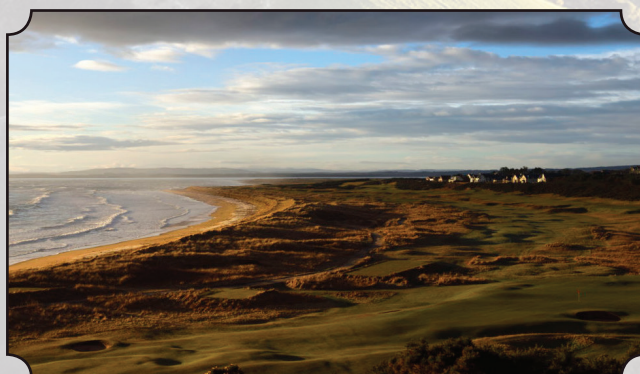
The Pro Shop presents to you the seven most scenic golf courses in the world as according to Travel Awaits. Let us know if you have been to one of these before!

*Shinnecock Hills*  
Southampton, Long Island, NY



*Cypress Point*  
Pebble Beach, California

*Royal Dornoch*  
Sutherland, Scotland







## *Muirfield*

Gullane, East Lothian, UK



## *Kingston Heath*

Victoria, Australia



## *Cape Kidnappers*

Hawke's Bay, New Zealand



## *Royal Birkdale*

Southport, England



# *The Argyle Inspiration*

SEASONAL DISHES INSPIRED BY OUR VERY OWN ARGYLE RESTAURANT

## Amaretto Hot Chocolate

*By Delightful E Made*

A warm treat for cooler evenings!

[READ FULL RECIPE](#)







## *Golf Like a Pro*

JASON HUSKA, GOLF PROFESSIONAL

---

Golf members, remember to post your scores to GHIN this fall heading into winter. Continue to do so all the way until December 31st. Note that you will no longer post them starting January 1st, 2022. You still need to post your score, even if your group is playing the ball up in the round.

**According to USGA rules, here are some reminders for acceptable scores:**

- 1.** For an 18-hole score to be acceptable for handicap purposes, a minimum of 14 holes must be played.
- 2.** If a player plays more than 9 holes but fewer than 14, all surplus hole scores are disregarded, and a 9-hole acceptable score must be submitted.
- 3.** For a 9-hole score to be acceptable for handicap purposes, a minimum of 7 holes must be played. If a player has not recorded a score on at least the minimum number of holes required for a 9-hole score, the score is not acceptable for handicap purposes, in the company of at least one other person, who may also act as a marker.

# Wine of the Month

SHANNON RIDGE, 2020 SAUVIGNON BLANC

**Middletown, CA**

Melon, green pepper, and floral are abundant on the nose, adding depth and complexity with a long and bright finish. Aged in stainless steel barrels; robust and food-friendly.







# Dreaming Up the Ideal Retirement Is Your Job. Helping You Get There Is Ours.

---

To learn more about why Edward Jones makes sense for you, call or visit my office today.



**Jon Klassen, AAMS®**

Financial Advisor

4801 S Cliff Ave, Ste 202  
Independence, MO 64055

816-478-7070



**Scott Wall, CFP®**

Financial Advisor

3500 NE Ralph Powell Rd,  
Suite E

Lee's Summit, MO 64064  
816-272-0460

[www.edwardjones.com](http://www.edwardjones.com)  
Member SIPC

**Edward Jones®**  
MAKING SENSE OF INVESTING



# Lakewood Oaks Country Club

---

The celebration of family, a tradition of civility, and a commitment to excellent facilities and services will always be the hallmarks of Lakewood Oaks Country Club. Members embrace a shared tradition of congeniality, high standards of personal conduct and continuity of family association.

Set amidst grand oak trees and surrounded by picturesque lakes, the 6300-yard golf club community's natural environment provides an exquisite backdrop, imparting a celebrated tradition of luxury and geniality that members have treasured since the Club's earliest beginnings.

*Be our guest.*



**LAKEWOOD OAKS**  
— COUNTRY CLUB —

651 NE St. Andrews Circle  
Lee's Summit, MO 64064  
816.373.2505  
[LakewoodOaksCC.com](http://LakewoodOaksCC.com)